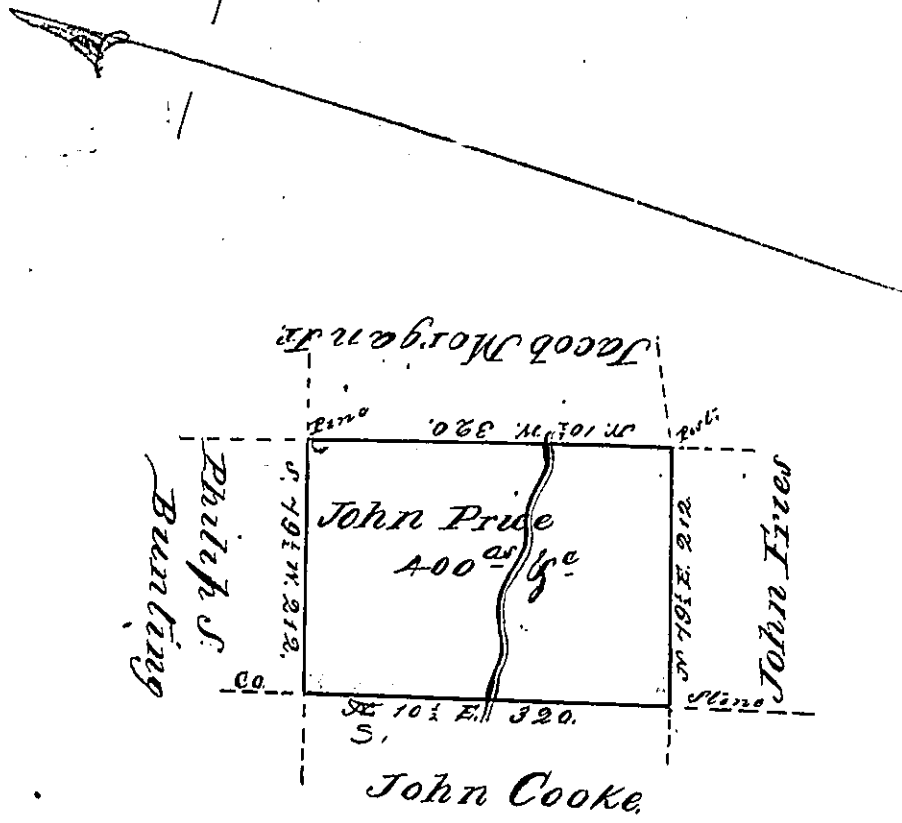


Hazle
Luzerne



A Draft of a tract of land called Situate
 on the waters of Catawissa Creek in the County
 of North^d or Northampton County containing four
 hundred acres & allowance - Surveyed John
 Price the 17th day of October 1793 by virtue of
 a warrant dated the 10th day of July 1793

Samuel Broadhead Esq^r }
 Sur^r: Genl }

by Wm Gray ss.

IN TESTIMONY that the above is a copy of the original remaining on file in the
 Department of Internal Affairs of Pennsylvania, made con-
 formably to an Act of Assembly approved the 16th day of
 February, 1833, I have hereunto set my Hand and caused
 the Seal of said Department to be affixed at Harrisburg, this

Nineteenth day of October 1876

Wm. Handley
 Secretary of Internal Affairs